

# Concrex® Cold Set, Concrex® Deep Fill Cold Set, Concrex® Colours Cold Set

Long-lasting formula for concrete repairs in cold conditions

## Watco Concrex Cold Set

Watco Concrex Cold Set provides heavy duty floor repairs in temperatures as low as 0°C. Compared with other repair mortars this formulation is particularly rich in epoxy resin. This provides superior strength and adhesion making it ideal for very thin section, feather-edge or intricate repairs. Maximum strength is achieved at only 5mm thick. May be applied at up to 50mm thick for patch repairs. A primer is not generally required. Watco Concrex Cold Set can be used to repair holes with minimal preparation - see section headed 'Priming'. In common with all Watco Concrex products, Watco Concrex Cold Set has good resistance to a wide range of chemicals commonly found in industry. A repair using Watco Concrex Cold Set is ready for light traffic in 24 hours at 0°C, or 6 hours at 10°C.

## Watco Concrex Deep Fill Cold Set

This formulation contains a larger aggregate and has a lower resin content, making it a quicker and more economical option for deeper repairs. It can be used up to 100mm deep in one layer. It has a coarser surface texture than Watco Concrex Cold Set. We recommend that this is used as a base layer for deep repairs, with a 5mm layer of Concrex Cold Set applied over the top.

## Watco Concrex® Colours Cold Set

This is a version of Watco Concrex Cold Set available in a range of colours to blend with existing coloured floors.

Watco Concrex Cold Set means that essential safety and maintenance repairs can be carried out all year round. Make your floor repairs permanent with Watco Concrex Cold Set.



### Areas of use:

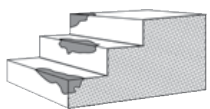
- Holes in concrete floors
- Damaged steps
- Repairs to chiller floors and cold rooms
- Broken floor joints
- Eroded, uneven concrete

### Features:

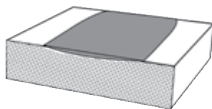
- Heavy duty, two part epoxy resin mortar
- Cures at 0°C for all year-round maintenance
- Virtually indestructible
- Coloured and deep fill versions available
- Good chemical resistance
- Resin rich for thin section and feather-edge repairs
- Suitable for interior and exterior repairs

For more great products  
in the Concrex® range  
[click here](#)

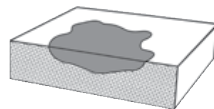
## Where to use Watco Concrex® Cold Set



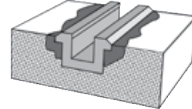
Damaged steps



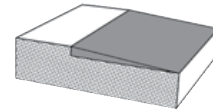
Worn floors



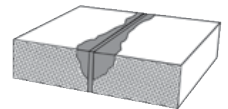
Holed floors



Fitting guide rails



Different levels



Spalled expansion joints

## Need help? Speak to the experts

Our dedicated and professional team are here to help you get the best results for your project. They will talk you through the preparation and application stages when using **Concrex Cold Set**.

Call our expert team on: **01483 418 418** (Weekdays 8:00am - 5:30pm. Saturday 9:00am - 12:00pm)



# Concrex® Cold Set, Concrex® Deep Fill Cold Set, Concrex® Colours Cold Set,

## 1 Surface Preparation

Surfaces should be clean, dry and free of all loose material. Wire brushing or sweeping is generally sufficient. Watco Bio-D degreaser can be used to remove grease and oil. If the surface is damp, it can be primed with Watco Tack Coat.

## 2 Priming

The resin content of Watco Concrex Cold Set is very high. This means that a primer is not usually required when filling holes in concrete floors or resurfacing rough or damaged concrete.

Watco Tack Coat adhesive primer is recommended when using Concrex Cold Set/Colours Cold Set as a thin section screed over smooth surfaces. It is also recommended when repairing intricate/high impact areas such as broken floor joint edges, and damaged step nosings. Watco Tack Coat can also be used at the same low temperatures as Concrex Cold Set. It is not usually required with Concrex Deep Fill Cold Set.

Watco Concrex Cold Set should ideally be applied to a dry surface, but if the surface is damp Watco Tack Coat should be used as a primer.

## 3 Mixing

For Watco Concrex Cold Set/Colours Cold Set the resin and the sand are already pre-blended. There are 4 bottles of grey curing agent supplied with a 10kg unit of Concrex Cold Set, and 1 tin of coloured curing agent supplied with a 10kg unit of Concrex Colours Cold Set. There are 2 larger bottles of grey curing agent and 2 tins of coloured agent in the 25kg packs.

The curing agent is added to the sand/resin at point of use, and once mixed the mortar should be used within 30-60 minutes depending upon temperature.

Do not mix inside the plastic bucket. Tip the sand/resin into a mixing tray or on a board.

Shake the bottles of curing agent until the liquid is a uniform grey. The tins of coloured curing agent should be stirred thoroughly.

Form the sand/resin into a mound and leave a small hole in the middle. Empty the curing agent into the hole, ensuring the tin is completely drained.

Carefully mix the aggregate with the curing agent using a trowel until a smooth mortar is obtained, this will take several minutes. The more thorough the mixing, the 'wetter', smoother and more manageable the mix becomes. Alternatively, you can knead the mixture by hand wearing suitable gloves. It is important to mix thoroughly until you achieve a consistent colour. A 'Cretangle' or suitable open pan mixer can be used to mix large quantities.

## 4 Application

Trowel the mortar firmly into the repair and finish with a trowel or float. To get a good smooth finish, regularly wipe the surface of the trowel with a cloth dampened with white spirit.

Watco Concrex Cold Set/Colours Cold Set are normally applied at 5-50mm thick, but repairs can be feather-edged if most of the repair is at least 5mm thick.

For repairs deeper than 50mm apply in separate layers allowing 6-8 hours between layers, or use Watco Concrex Deep Fill Cold Set which can be applied at 15-100mm thick in one layer.

## 5 Safety

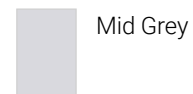
Material Safety Data Sheets are available.

Watco UK Ltd, Eastgate Court, 195-205 High Street, Guildford, Surrey, GU1 3AW

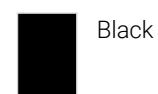
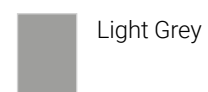
 Tel: **01483 418 418** www.watco.co.uk E-mail: [sales@watco.co.uk](mailto:sales@watco.co.uk)

### Colours

#### Concrex® Cold Set/Concrex® Deep Fill Cold Set



#### Concrex® Colours Cold Set



# Concrex<sup>®</sup> Cold Set, Concrex<sup>®</sup> Deep Fill Cold Set, Concrex<sup>®</sup> Colours Cold Set

## Specification

<b>Composition</b>	<p>Concrex Cold Set – Finely graded sand pre-blended with resin. 10kg contains 4 small bottles of curing agent, a 25kg contains 2 large bottles.</p> <p>Concrex Colours Cold Set – Finely graded sand pre-blended with resin. 10kg contains 1 tin of coloured curing agent, a 25kg contains 2 tins.</p> <p>Concrex Deep Fill Cold Set – 25kg contains 1 bottle of curing agent and the resin blend contains a larger aggregate.</p>
<b>Primer Required</b>	Not usually – see section headed 'Priming'.
<b>Usage Interior/Exterior</b>	Interior & exterior.
<b>Working Life</b>	30 - 60 minutes depending upon temperature.
<b>Application Tools</b>	Steel float or trowel.
<b>Suitable For</b>	Concrete, sand & cement and metal.
<b>Pack Sizes</b>	Concrex Cold Set/Colours Cold Set: 10kg, 25kg. Concrex Deep Fill Cold Set: 25kg.
<b>Coverage</b>	<p>Concrex Cold Set/Colours Cold Set – 10kg: 1.2m<sup>2</sup> at 5mm thick, 25kg: 3m<sup>2</sup> at 5mm thick.</p> <p>Concrex Deep Fill Cold Set – 25kg: 0.5m<sup>2</sup> at 30mm thick.</p>
<b>Shrinkage (on cure)</b>	Negligible.
<b>Damaged by Frost</b>	No.
<b>Can be Feather-edged</b>	Concrex Cold Set/Colours Cold Set – Yes. Concrex Deep Fill Cold Set – No.
<b>Application Thickness</b>	<p>Concrex Cold Set/Colours Cold Set - up to 50mm for hole filling only. Do not use at more than 15mm for screeding.</p> <p>Concrex Deep Fill Cold Set – can be used from 15mm to 100mm in one layer.</p>
<b>Cleaning Tools</b>	Use white spirit before product starts to cure.
<b>Shelf Life</b>	12 months in unopened container.
<b>Storage</b>	Between 10 °C - 30 °C. Do not allow to freeze.
<b>Chemical Resistance</b>	Resistant to spillages of many chemicals at 20°C commonly met within industry, including: paraffin, petrol, fuel oils, alcohols, dilute nitric, sulphuric and hydrochloric acids, sugar solutions, oxalic acid, citric acid, caustic soda, salt solutions, cutting oils, mineral oils. Advice given regarding other chemicals.
<b>Principle Limitations</b> <b>Please contact us regarding applications not described here.</b>	Do not apply to wet surfaces. Watco Tack Coat should be used for application to damp surfaces before applying Watco Concrex Cold Set. Please refer to Watco Tack Coat data sheet for further information. These products should not be subjected to temperatures above 60°C.

# Concrex<sup>®</sup> Cold Set, Concrex<sup>®</sup> Deep Fill Cold Set, Concrex<sup>®</sup> Colours Cold Set

## Curing Times

Curing Times	Light Traffic	Heavy Traffic
At 10°C	6 hours	8 hours
At 0°C	24 hours	48 hours

## Strength

Concrex<sup>®</sup> Cold Set/Colours Cold Set is far stronger than concrete. The table shows a comparison (typical figures).

	Tensile Strength	Flexural Strength	Compressive Strength
<b>Watco Concrex<sup>®</sup> Cold Set/Colours Cold Set</b>	15.4 MN/m <sup>2</sup>	55.9 MN/m <sup>2</sup>	55.2 MN/m <sup>2</sup>
<b>Concrete</b>	3.4 MN/m <sup>2</sup>	6.9 MN/m <sup>2</sup>	21.41 MN/m <sup>2</sup>