

# Concrex® Fine Filler

An easy to use paste for repairing minor imperfections in floors before painting



Concrex Fine Filler is an epoxy resin formula mixed to make a repair putty. Use to repair smaller chips and divots in concrete floors prior to painting. If untreated, imperfections in the surface can be highlighted and become more obvious by a coating, especially with a gloss finish. Concrex Fine Filler is used to prepare the surface prior to coating and significantly improve the overall finish to the surface.

**Areas of use:**

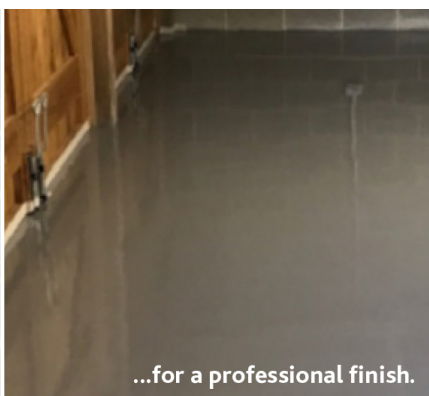
- Scratches
- Blemishes
- Bolt holes

**Features:**

- Gives a painted floor a professional finish
- Fast drying permanent repairs
- Easy to mix and apply
- Heavy duty epoxy resin repairs
- Rapid drying ready for painting



Fills surface chips and scratches...



...for a professional finish.

## Need help? Speak to the experts

Our dedicated and professional team are here to help you get the best results for your project. They will talk you through the preparation and application stages when using **Concrex Fine Filler**.

Call our expert team on: **01483 418 418** (Weekdays 8:00am - 5:30pm. Saturday 9:00am - 12:00pm)



# Concrex<sup>®</sup> Fine Filler

An easy to use paste for repairing minor imperfections in floors before painting

## 1 Surface Preparation

Surfaces should be clean, sound and free from dust, oil, grease or other contaminants. Some surface dampness can be tolerated but surfaces should not be wet.

## 2 Mixing (wear protective gloves provided in the pack)

Using the spatulas provided, take equal sized portions of the resin (off white) and curing agent (black). Mix them together thoroughly on a suitable mixing board until they are a uniform grey colour.

The ideal mixing ratio is 1:1 by weight or volume – you should try to estimate equal quantities as closely as possible, but there is no need to weigh or measure them. Mix small, manageable amounts together at any one time and no more than can be used in 15 - 20 minutes.

## 3 Application

Using the plastic scraper provided, immediately smear the mixed components over the repair and smooth off. This is made easier by wiping the plastic scraper with a cloth dampened with white spirit. The repair can be over painted with any Watco products after only 1 - 2 hours.

## 4 Safety

All product labels provide general safety information. Material Safety Data Sheets are available.

## 5 Ordering

Available direct from Watco UK Limited and through agents worldwide. All Watco products are sold subject to the Company's Standard Conditions of Sale.

The Company and its representatives are often asked to comment on potential uses of Watco products which differ from those described in the Company's data sheets. Whilst in such cases the Company and its representatives will always try to offer helpful and constructive advice, the Company cannot be held responsible for the results of such uses unless they are specifically confirmed in writing by Watco.

# Concrex® Fine Filler

An easy to use paste for repairing minor imperfections in floors before painting

## Specification

<b>Composition</b>	A two part epoxy resin paste.
<b>Number of Components</b>	1 x resin, 1 x curing agent, gloves, spreader, 2 x spatulas.
<b>Finish</b>	Smooth, impervious surface.
<b>Primer Required</b>	No.
<b>Usage Interior/Exterior</b>	Exterior & interior.
<b>Working Life</b>	10 - 15 minutes at 20°C, 20 - 30 minutes at 10°C.
<b>Application Tools</b>	Spreader, spatulas, gloves – supplied.
<b>Suitable For</b>	Concrete, sand & cement and metal.
<b>Pack Size</b>	1.5kg
<b>Coverage</b>	A 1.5kg pack makes approximately 1 litre of filler.
<b>Shrinkage (on cure)</b>	Negligible.
<b>Can be Feather-edged</b>	Yes.
<b>Application Thickness</b>	Up to 5mm. For depths greater than this, build up in layers or use Watco Concrex Carbon Fibre.
<b>Cleaning Tools</b>	The plastic scraper provided for applying should be wiped clean with white spirit or a similar solvent before the Concrex® Fine Filler cures.
<b>Shelf Life</b>	12 months in unopened containers.
<b>Storage</b>	Store at a temperature between 10°C and 30°C. Do not allow to freeze.
<b>Safety</b>	All product labels provide general safety information. Material Safety Data Sheets are available. Food products must be removed from the area during application and cure.

## Curing Times

Curing Times	Initial set/Overpainting	Foot Traffic	Heavy Traffic	Fully cured (full hardness)
10°C	2 hours	6 hours	24 hours	7 days
20°C	1 hours	3 hours	16 hours (overnight)	4 days