

# Concrex® Flex

## Impact and crack resistant floor repairs

Watco Concrex Flex has been specially formulated to resist cracking in areas where floors may be subject to movement, vibration, flexing or impact.

The two part, epoxy resin mortar has outstanding strength and durability and is modified with an epoxy resin blend that offers a degree of flexibility. It is far less likely to crack or break under impact than a conventional floor repair mortar.

Watco Concrex Flex also has excellent chemical resistance and cures quickly to allow the floor to be put back into use.

Heavy duty thin section floor repairs are so strong that they can be feather edged.



### Areas of use:

- For floors subject to vibration, movement or impact

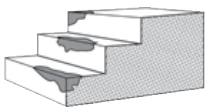
### Features:

- Virtually indestructible epoxy resin floor repairs
- Exceptional impact and wear resistance
- Resistant to vibration
- May be feather edged
- Fast curing
- Chemical resistant and anti slip
- Use internally or externally – it will not be damaged by frost
- Impermeable and non-dusting
- Can be painted if required
- Suitable for heavy traffic

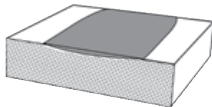


For more great products  
in the Concrex® range  
[click here](#)

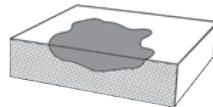
### Where to use Watco Concrex® Flex



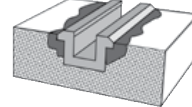
Damaged steps



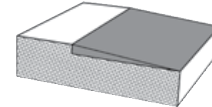
Worn floors



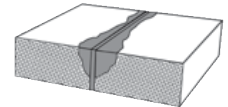
Holed floors



Fitting guide rails



Different levels



Spalled expansion joints

## Need help? Speak to the experts

Our dedicated and professional team are here to help you get the best results for your project. They will talk you through the preparation and application stages when using **Concrex Flex**.

Call our expert team on: **01483 418 418** (Weekdays 8:00am - 5:30pm. Saturday 9:00am - 12:00pm)



# Concrex® Flex

## 1 Surface Preparation

Surfaces should be clean, dry and free of all loose material. Wire brushing or sweeping is generally sufficient. Watco Bio-D degreaser can be used to remove grease and oil. If the surface is damp, it can be primed with Watco Tack Coat.

## 2 Priming

The resin content of Watco Concrex Flex is very high. This means that a primer is not usually required when filling holes in concrete floors or resurfacing rough or damaged concrete. Watco Tack Coat adhesive primer is recommended when using Concrex Flex as a thin section screed over smooth surfaces. It is also recommended when repairing intricate/high impact areas, such as broken floor joint edges and damaged step nosings.

## 3 Mixing (wear protective gloves)

The resin and the sand are already pre-blended and is supplied with bottles of curing agent, 4 x 100ml. The curing agent is added to the sand/resin at point of use, and once mixed, the mortar should be used within 15 - 30 minutes depending upon temperature.

If the entire pack of Watco Concrex Flex cannot be used within 30 minutes, it can be part mixed. To split a pack, carefully halve the sand/resin (ideally measured by weight), and use half the number of curing agent bottles. Do not mix inside the plastic bucket. Tip the sand/resin into a mixing tray or on a board. Shake the bottles of curing agent thoroughly until the liquid is a uniform grey. Form the sand/resin into a mound and leave a small hole in the middle. Empty the curing agent into the hole ensuring the bottles are completely drained.

Carefully mix the aggregate with the curing agent using a trowel until a smooth mortar is obtained; this will take several minutes. The more thorough the mixing, the 'wetter', smoother and more manageable the mix becomes. Alternatively, you can knead the mixture by hand wearing suitable gloves. It is important to mix thoroughly until you achieve a consistent colour. A 'Cretangle' or suitable open pan mixer can be used to mix large quantities.

Empty the bottles of curing agent onto the sand/resin



Mix thoroughly using a trowel (or by hand – it's easier)



Trowel firmly into the repair



Wipe the trowel with white spirit to get a good finish



## 4 Application

Trowel the mortar firmly into the repair and finish with a trowel or float. To get a good smooth finish, regularly wipe the surface of the trowel with a cloth dampened with white spirit.

Watco Concrex Flex is normally applied at 5mm - 50mm thick but repairs can be feather edged if most of the repair is at least 5mm thick. For repairs deeper than 50mm apply in separate layers allowing 6 - 8 hours between layers. Alternatively, use Concrex Deep Fill which can be applied at 15mm - 100mm thick in one layer.

## 5 Safety

Material Safety Data Sheets are available.

# Concrex<sup>®</sup> Flex

## Specification

<b>Composition</b>	A finely graded sand pre-blended with epoxy resin.
<b>Colour</b>	Mid grey.
<b>Primer Required</b>	See 'Priming' section on P.2
<b>Usage Interior/Exterior</b>	Interior & exterior
<b>Working Life</b>	30-60 minutes depending on temperature. If Concrex Flex is used past its working life, trowelling will become difficult and adhesion will be reduced.
<b>Application Tools</b>	Steel float or trowel
<b>Suitable For</b>	Concrete, sand & cement and metal
<b>Pack Sizes</b>	10kg
<b>Coverage</b>	Approximately 1.2m <sup>2</sup> per 10kg at 5mm thick.
<b>Shrinkage (on cure)</b>	Negligible.
<b>Damaged by Frost</b>	No.
<b>Can be Feather-edged</b>	Yes, around the edge of a repair – full strength at 5mm thick.
<b>Application Thickness</b>	Up to 50mm for hole filling only. Do not use at more than 15mm for screeding.
<b>Curing Time</b>	Normally 3 - 6 hours depending on temperature. Curing time will be extended by low temperatures. Curing will be very slow or even arrested by temperatures at 10°C and below.
<b>Cleaning Tools</b>	Equipment used for mixing and applying should be wiped clean with white spirit or a similar solvent before the Concrex Flex cures.
<b>Shelf Life</b>	12 months in unopened container.
<b>Storage</b>	Store at a temperature between 10°C and 30°C. Do not allow to freeze.
<b>Safety</b>	All product labels provide general safety information. Material Safety Data Sheets are available. Food products must be removed from the area during application and cure.
<b>Chemical Resistance</b>	Resistant to spillages of many chemicals at 20°C commonly used within industry, including: paraffin, petrol, fuel oils, alcohols, dilute nitric, sulphuric and hydrochloric acids, sugar solutions, oxalic acid, citric acid, caustic soda, salt solutions, cutting oils, mineral oils. Advice given regarding other chemicals.
<b>Principle Limitations</b> Please contact us regarding applications not described here.	Do not apply to wet surfaces. Watco Tack Coat should be used for application to damp surfaces before applying Watco Concrex Flex.